



Do you know how much power your appliances use?

COOLmob Information Sheet on Power-Mate LITE

The Power-Mate *Lite* measures how much energy an appliance uses, both whilst in operation and in stand-by mode. It can also record how much an appliance is costing you and the amount of greenhouse pollution it creates. Checking the energy use of your appliances is one aspect of a broader home energy audit.



Why use a Power-Mate *Lite*?

Appliances can account for up to 40% of a household's energy use, and this number is predicted to grow as households increase the number, size and variety of electrical goods.

Standby power (such as on your TV) can account for 10% of electricity consumption in a typical home, costing households up to \$180 a year on their electricity bills.

Using a Power-Mate *Lite* can help you to identify and reduce unnecessary energy costs and greenhouse pollution from your home and office.

What can a Power-Mate *Lite* measure?

The Power-Mate *Lite* can measure three types of energy consumption:

- Level of energy an appliance uses when it is running;
- Level of energy an appliance uses in standby mode;
- And whether an appliance left on at the switch while not being used (for example toaster, kettle) is actually consuming power.

The Power-Mate *Lite* also measures Greenhouse Gas and expected Meter readings.

You'll find out:

- How much extra a large TV uses compared to a small one?
- Which is more efficient, a laptop or desktop computer?

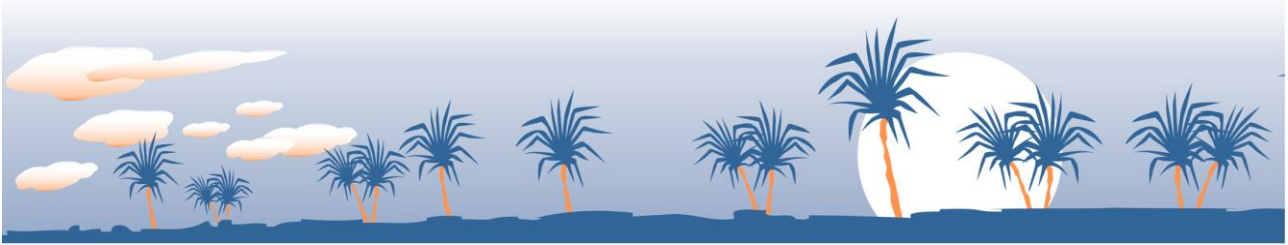
COOLmob

c/- Environment Centre NT • GPO Box 2120, Darwin NT

Phone: 08 8981 2532 • Fax: 08 8941 0387

Email: coolmob@iinet.net.au

Web: <http://www.coolmob.org/>



- How much is the air conditioner costing to run?
- How energy do the appliances use when in stand-by mode?

While individual appliances may seem to use little power, the sum of all appliances on at the switch or in sleep/standby mode can really add up. Have a look at <http://www.energyrating.gov.au/standby.html> to find out more information on standby mode and energy usage.

Where can you get a Power-Mate *Lite*?

You can borrow a **Power-Mate** (including instructions for use) from any of the Darwin City Council libraries for one week. There are:

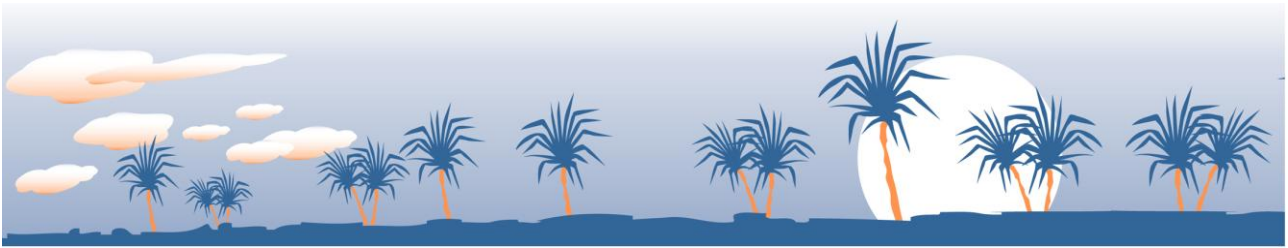
- 3 at Casuarina
- 2 at the City Library
- 2 at Nightcliff
- 2 at Kamara

Print off the table below and use it to help you work out how much all the appliances cost you each year! You might be surprised how much they are really costing you.

And if you have any questions just give the COOLmob team a call!

COOLmob

c/- **Environment Centre NT** • GPO Box 2120, Darwin NT
Phone: 08 8981 2532 • Fax: 08 8941 0387
Email: coolmob@iinet.net.au
Web: <http://www.coolmob.org/>



Appliance	WHEN APPLIANCE IS RUNNING			IN STANDBY/SLEEP MODE OR ON AT POWERPOINT		
	Power (Watts)	Quarterly cost (\$)	Yearly greenhouse emissions (kg)	Power (Watts)	Quarterly cost (\$)	Yearly greenhouse emissions (kg)
ADSL modem						
Air conditioner						
Clock radio						
Coffee grinder/maker						
Computer						
Computer monitor						
Cordless phone						
Dishwasher						
DVD Player						
Electric kettle						
Electric toothbrush/shaver						
External hard disk drive						
Fan						
Foxtel/Austar cable box						
Fridge						
iPod charger						
iPod dock						
Microwave						
Mobile phone charger						
Printer/Scanner						
PS3/XBox/Wii						
Stereo/Hi Fi						
Toaster						
TV						
Washing machine						
Other						
Other						
Other						
Total						



c/- Environment Centre NT • GPO Box 2120, Darwin NT
 Phone: 08 8981 2532 • Fax: 08 8941 0387
 Email: coolmob@iinet.net.au
 Web: <http://www.coolmob.org/>